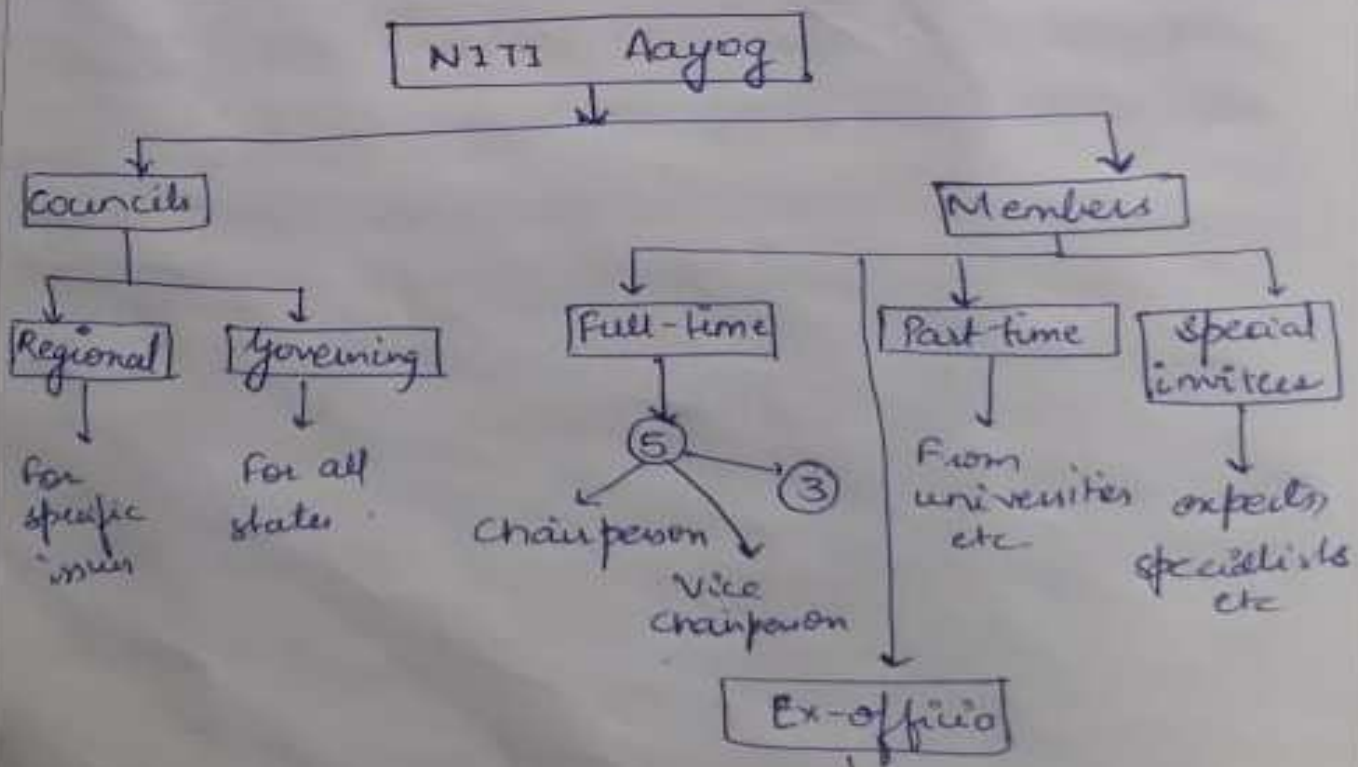


Q. What is NITI Aayog? What is its current structure? Discuss the work performed by NITI in recent time?

National Institute of Transforming India Aayog (NITI) is a policy think tank established by PM Narendra Modi on 1 Jan, 2015 after dissolving Planning Commission. It aims at more participation and involvement of states into planning. It has a bottom-up approach. In the era of SDGs NITI tries to have a more corporate look as compared to erstwhile Planning Commission, it is a think tank with no power of allocation with enhanced state role.

Structure of NITI Aayog -



NITI consists of :-

(i) Full time Members - chairman, The PM is ex-officio chairperson, assisted by a vice chairperson and other three like CEO equivalent to secretary to Govt.

(ii) Part-time Members - These are chosen on rotational basis and may belong to leading institutions of country.

(iii) Ex-officio - (more members of cabinet which are nominated by PM.

(iv) Councils - Councils are formed from states consisting of Chief Ministers, administrations and Lieutenant Government. May be regional according to related issue and permanent governing council for involvement of states.

### Recent Developments -

(i) Various Indexes and Surveys like education survey, SPGs development report and other missions create a feeling of competitiveness within state and promote better performance and standard of living.

(ii) Cooperation and collaboration with various other institutions like IBM, Google for promoting Artificial Intelligence, Crop Yield Model and other technologies helps in completing mission plans.

(iii) New planning time-line has made the process of planning more comprehensive and targeted. Like for example - small plans of 3 years, medium 7 and long term plans of 15 years.

(iv) Programs such as Aspirational Districts Programme and Atal Innovation Mission have provided for urbanisation and developing remote areas along with over all development.

Though, new it sometimes seems like old wine in a new bottle, just with some enhanced features it has same work as that of Nehru's Planning Commission with no power of allocation of funds. But it is not just the commission but also proper implementation and review which form effective planning. So, only NITI can not do all the wonders, it requires cooperation and proper implementation within centre and states.